

This report has been issued as a replacement of Report No. 17283.6 to reflect changes in the company details and product name.



Accredited for compliance with ISO/IEC 17025 – Testing
 NATA is a signatory to the ILAC Mutual Recognition Arrangement for the mutual recognition of the equivalence of testing, medical testing, calibration and inspection reports

OIL-WET INCLINING PLATFORM SLIP RESISTANCE TEST

Ekodeck Flame Fighter

Prepared for: Ekologix Australia Pty Ltd
 Neil Mathias
 Unit 1, 20-26 Sabre Drive
 PORT MELBOURNE VIC 3207

Specimen Description: Ekodeck Flame Fighter, Size Tested - 137x1040 mm.

No. of Specimens: 4 off

Surface Structure: Structured

Specimen Preparation: Washed with water and pH neutral detergent, rinsed then dried.

Specimen Configuration: Unfixed

Test Direction: Test conducted parallel with surface profile.

Joint Type & Width: N/A

Air Temperature: 21°C

Test Standard: AS 4586:2013 Slip resistance classification of new pedestrian surface materials, Appendix D - Oil Wet Inclining Platform Test

Test Shoe: Leipzig V73-SP

Test Location: ATTAR 44-48 Rocco Drive, Scoresby, VIC, 3179

Test Date: 16 November 2021

Test Personnel: Awel Guled and Marcus Braché

Displacement Space (rounded to the nearest 0.5cm ³ /dm ²):	Not tested
Displacement Space Assessment Group (Appendix E, AS 4586 - 2013):	Not tested
Corrected mean overall acceptance angle (α_{ave}) (rounded down to the nearest degree):	10°
Classification:	R10

These results apply only to the specimens tested and it is recommended that before selection of flooring or paving materials the effect of service conditions, including maintenance procedures and wear on their slip resistance be checked.

Reviewed By:



Awel Guled
 Compliance and Test Technician
 Approved Signatory



Marcus Braché
 Senior Engineering Technician
 Approved Signatory

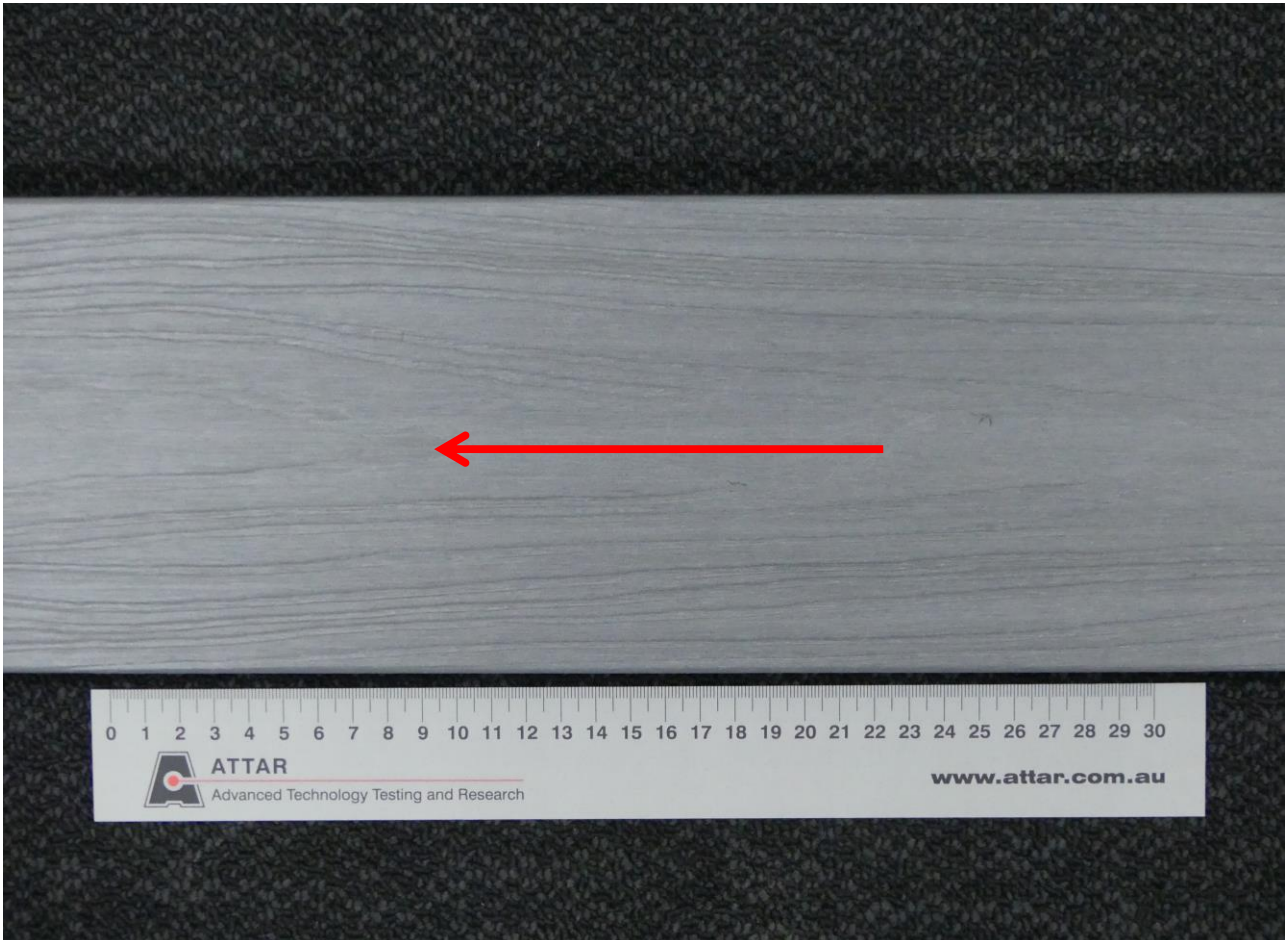


Figure 1: Ekodeck Flame Fighter
Arrow indicates direction of testing



CLASSIFICATION CRITERIA – AS 4586 - 2013
Oil Wet Inclining Platform Test – Appendix D

Compliance

TABLE 5: CLASSIFICATION OF PEDESTRIAN SURFACE MATERIALS ACCORDING TO THE OIL-WET INCLINING PLATFORM TEST

Classification	Angle, degrees
No Classification	<6
R9	$\geq 6 < 10$
R10	$\geq 10 < 19$
R11	$\geq 19 < 27$
R12	$\geq 27 < 35$
R13	≥ 35